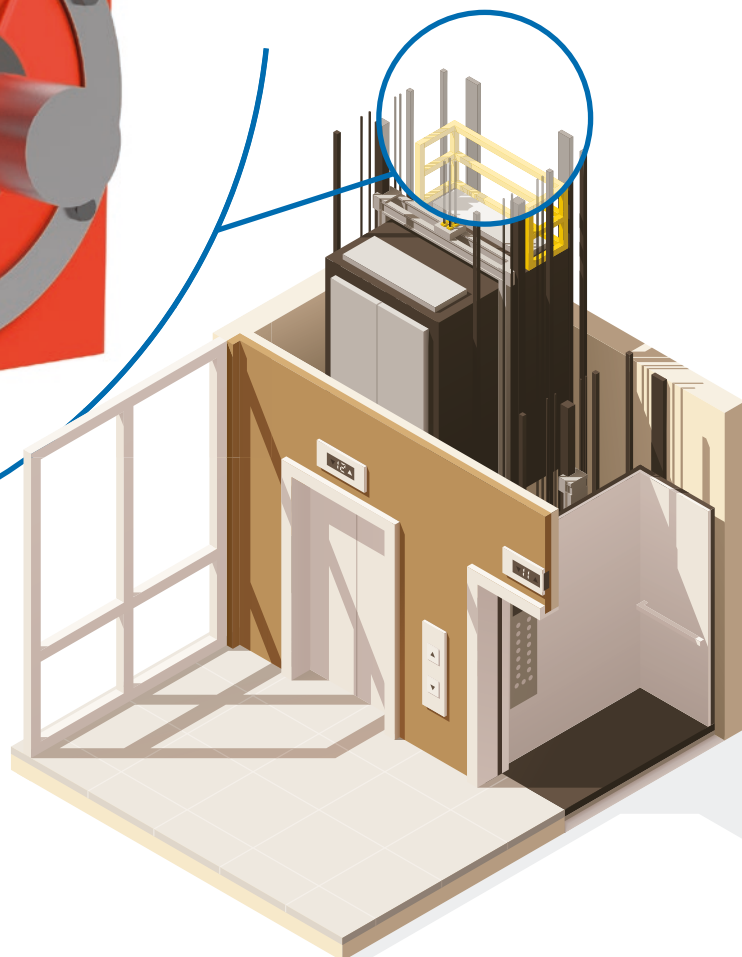
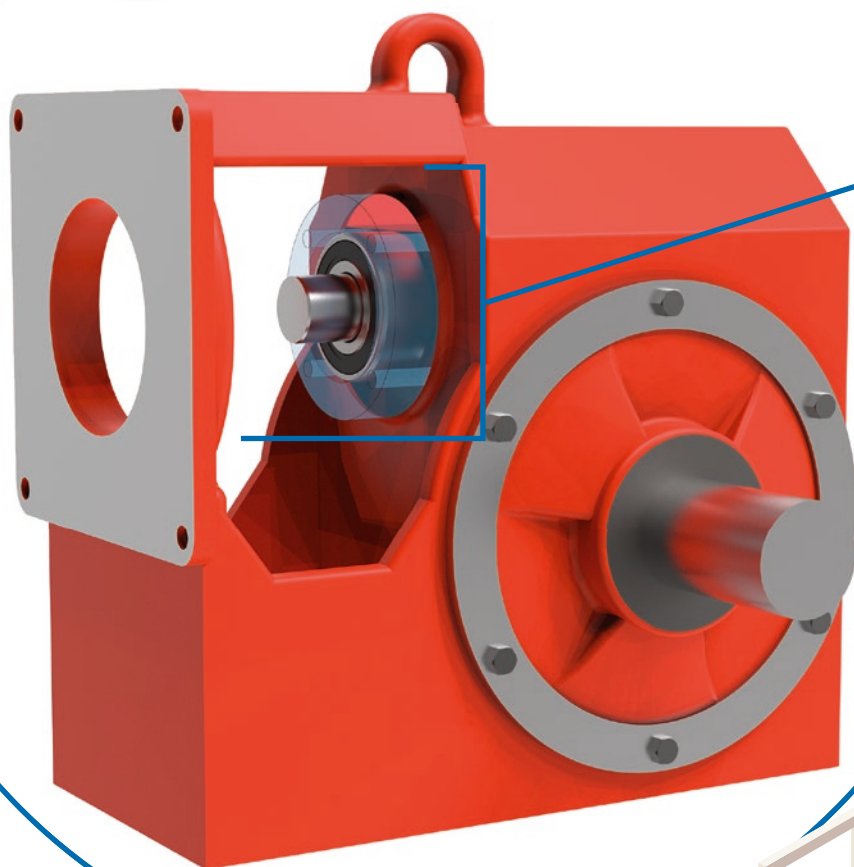


ZKL bearings for gearboxes in elevators



ZKL GROUP

Gearboxes of elevators have usually a very high gear ratio and worm gears are often used to achieve it. Worm shafts and worm gears are exposed to both high radial and thrust loads. In addition, these gearboxes are very often used in elevators for passengers' transport. Therefore these bearings have greater technical demands not only in terms of reliability and durability, but also have to meet requirements for low noise levels.



بسیما رایزن پارس

نمایندگی ایران

تلفن تماس : ۸ و ۸۸۳۲۴۹۳۷ - ۰۲۱

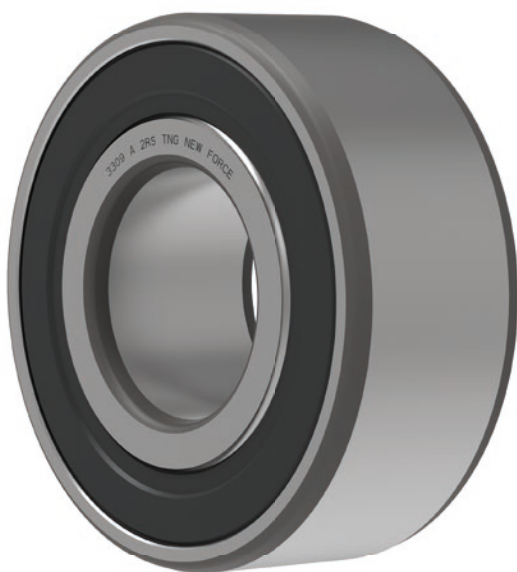
E-mail : sales@brp.co.ir

Sealed double-row angular contact ball bearings

Double-row angular contact ball bearings are capable to bear both radial and thrust loads (double direction). On one hand these bearings provide a rigid shaft arrangement, because they can bear also breakout torques, on the other hand they are very sensitive to possible misalignments of the rings caused by machine's inaccuracies. Sealed series of double row angular contact ball bearings have the same main dimensions as the non-sealed series. The implemented sealing has many advantages – reduces noise generated inside the bearing and provides an additional barrier that prevents impurities from penetrating inside the bearing. As a result, the grease inside the bearing has a higher cleanliness level resulting in both a greater working life and performance reliability. The requested maintenance intervals for such bearings are longer which leads to lower maintenance costs. ZKL produces both sealed double-row angular contact ball bearings as well as open versions of the same.

Sealed double-row angular contact ball bearings for gearboxes in elevators	Bearing dimensions				Load ratings		Reference speed for grease lubrication
	Inner diameter	Outer diameter	Width	Mass	Dynamic	Static	
	d [mm]	D [mm]	B [mm]	m [kg]	C _r [kN]	C _{0r} [kN]	n [min ⁻¹]
3304A-2RSTNG NF	20	52	22.2	0.21	23.3	15.1	7 100
3305A-2RSTNG NF	25	62	25.4	0.35	31.5	21.0	6 800
3306A-2RSTNG NF	30	72	30.2	0.54	43.1	29.7	5 900
3307A-2RSTNG NF	35	80	34.9	0.71	51.0	36.0	5 100
3308A-2RSTNG NF	40	90	36.5	0.95	62.3	45.2	4 500
3309A-2RSTNG NF	45	100	39.7	1.25	65.5	51.6	4 000
3310A-2RSTNG NF	50	110	44.4	1.75	81.0	65.0	3 600

Bearings listed above are the most commonly used ones in such application. In order to get information regarding entire production range of ZKL sealed double-row ACBBs contact support@zkl.cz.



ZKL Bearings CZ, a. s.

Líšeňská 2828/45, 628 00 Brno, Czech Republic

Tel.: +420 544 135 120, E-mail: info@zkl.cz



بیسینارایزن پارس

نمایندگی ایران

تلفن تماس: ۸ و ۸۸۳۲۴۹۳۷ - ۰۲۱

E-mail: sales@brp.co.ir

WWW.ZKL.CZ